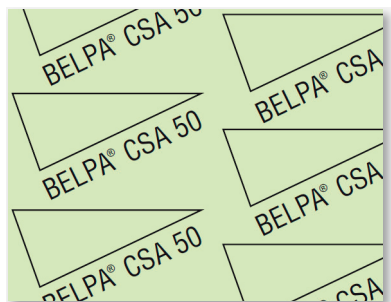


COMPOSITION



BELPA® CSA-50 is a compressed sheet for gaskets made of mineral fibre, aramide and dispersed inorganic loads mixed in a matrix of type NBR rubber.

Gasket sheet with high resistance to temperature and pressure, suitable for a wide range of industrial sealing applications. Gasket joint material used in whole services, industrial plants and in special in water, gas, oils and hydrocarbons (up to a moderated temperature) pipes. It is also available with steel wire reinforcement and anti-stick coating. **REF. BELPA® CSA-50 M/G.**

BELPA® CSA 50 is a gasket sheet manufactured according to circularity and sustainability models and processes, thus obtaining a RECYCLED and RECYCLABLE material (R&R).

TECHNICAL DATA

Standard sizes (mm). Other upon request	1500x1500; 2000x1500
Standard thickness (mm). Other upon request	0.5; 0.8; 1.0; 1.5; 2.0; 3.0;
Density (+/-10%)	1.75 g/cm ³
Compressibility ASTM F-36 A	7% - 15%
Recovery ASTM F-36 A	>50%
Transverse tensile strength ASTM F-152	9 MPa
Gas permeability DIN 3535/6	<1 cm ³ /min
THICKNESS INCREASE ASTM F-146	
ASTM oil N°3 5h 150°C	<10%
ASTM fuel B 5h 20°C	<10%

* Typical properties for 2 mm thickness.

CERTIFICATIONS

DVGW (DIN 3535-6)

DVGW (DIN 3053 HIGH TEMPERATURES)

WRAS (BS 6920 DRINKING WATER)

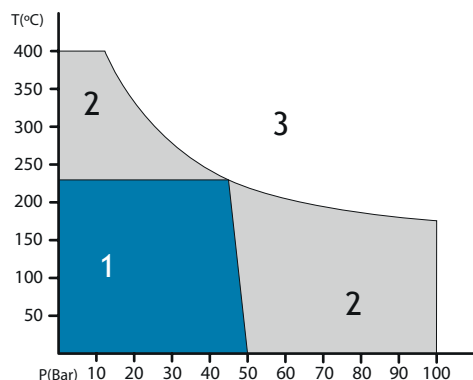
TZW (DIN 16421-REV.W270-DRINKING WATER)

BAM (DIN 1797/ISO 21010 OXYGEN)

ROHS (D.UE 2015/863-2011/65)

TZW (KTW BWGL-UBA DRINKING WATER)

PRESSURE - TEMPERATURE DIAGRAM



P-T OPERATING GUIDELINES:

- 1- Usually satisfactory to use without reference to Montero. Technical examination is normally unnecessary.
- 2- Must refer to Montero for advice. A technical examination is recommended.
- 3- Area not recommended.

The P-T diagram helps the user or designer who often knows the operating temperature and pressure to carry out an initial selection of a suitable material. The P-T diagram cannot guarantee the suitability of a material for an application.

Good performance and long service life of gaskets depend in large measure on fitting and operation conditions, over which the manufacturer has no control. The data given on this technical sheet should not be used as application limits, but as guidance for an appropriate choice. We can offer guarantees only for the quality of our products.