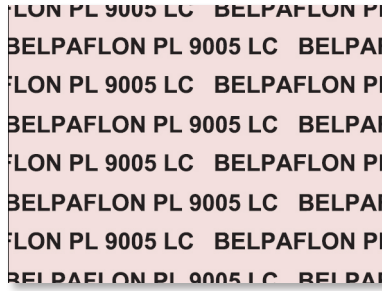


COMPOSITION:



P.T.F.E sheet with an addition of special particles in order to increase the creep deformation resistance. Gasket material with an excellent chemical resistance, including acids and alcalis at high concentrations (sodium hydroxide, sulphuric acid, nitric acid, hydrogen chloride, potassium hydroxide).

It is specially designed for services in which the chemical attack is combined with high pressures and temperatures improving on the traditional P.T.F.E. sheets behaviour. There is an addition of special charges that prevents the creep deformation.

Non flammable and no ageing, it is easy to cut and it has a excellent assembly and disassembly as its antistick proprieties. Complies with FDA Recommended in Chemical and Petrochemical Industry and Paper industry, specially instead of Sandwich gasket.

BELPAFLON PL 9000 LC: white specially designed for pharmaceutical and foodstuff Industry.

BELPAFLON PL 9006 LC: specially designed for low loading applications in glass, ceramic and plastic flanges.

TECHNICAL DATA

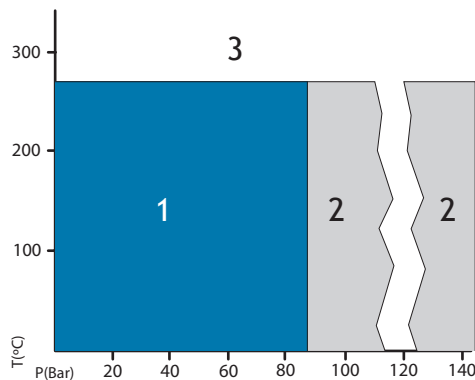
Standard sizes (mm). Other upon request	1500 x 1500
Standard thickness (mm). Other upon request	1.5; 2.0; 3.0
Density (+/-10%)	2.20 g/cm ³
Temperature min./max. (°C)	-200 / +260
Leakage Rate (N2) DIN 3535	< 0.02 ml/min
Compressibility ASTM F-36 A	15%
Recovery ASTM F-36 A	30%

* Typical properties for 2 mm thickness.

CERTIFICATIONS

FDA (FDA 21, CFR 177-1550)

PRESSURE - TEMPERATURE DIAGRAM



P-T OPERATING GUIDELINES:

- 1- Usually satisfactory to use without reference to Montero. Technical examination is normally unnecessary.
- 2- Must refer to Montero for advice. A technical examination is recommended.
- 3- Area not recommended.

The P-T diagram helps the user or designer who often knows the operating temperature and pressure to carry out an initial selection of a suitable material. The P-T diagram cannot guarantee the suitability of a material for an application.

Good performance and long service life of gaskets depend in large measure on fitting and operation conditions, over which the manufacturer has no control. The data given on this technical sheet should not be used as application limits, but as guidance for an appropriate choice. We can offer guarantees only for the quality of our products.